

Superior Production Management
Systems for the Printing Industry

Are you communicating with your equipment? Digital telepathy doesn't seem that far off with today's technology—but it's highly unlikely. That is why today's competitive printing companies need sophisticated computer systems to provide the necessary information when making vital business decisions.

Our suite of production systems have bridged this communication gap and are guaranteed to provide the wealth of valuable information needed to boost the profitability of your business.

Our systems are designed to enable printing industry production managers and executives to monitor daily production and long term trends, to improve production efficiencies, reduce waste, reduce downtime, determine areas in need of improvement, and measure results from process improvement projects.

P-DAQ

Press Management/Press Counting System. Runs on a very wide range of web and sheet-fed presses, including the latest and most technologically advanced presses on the market.

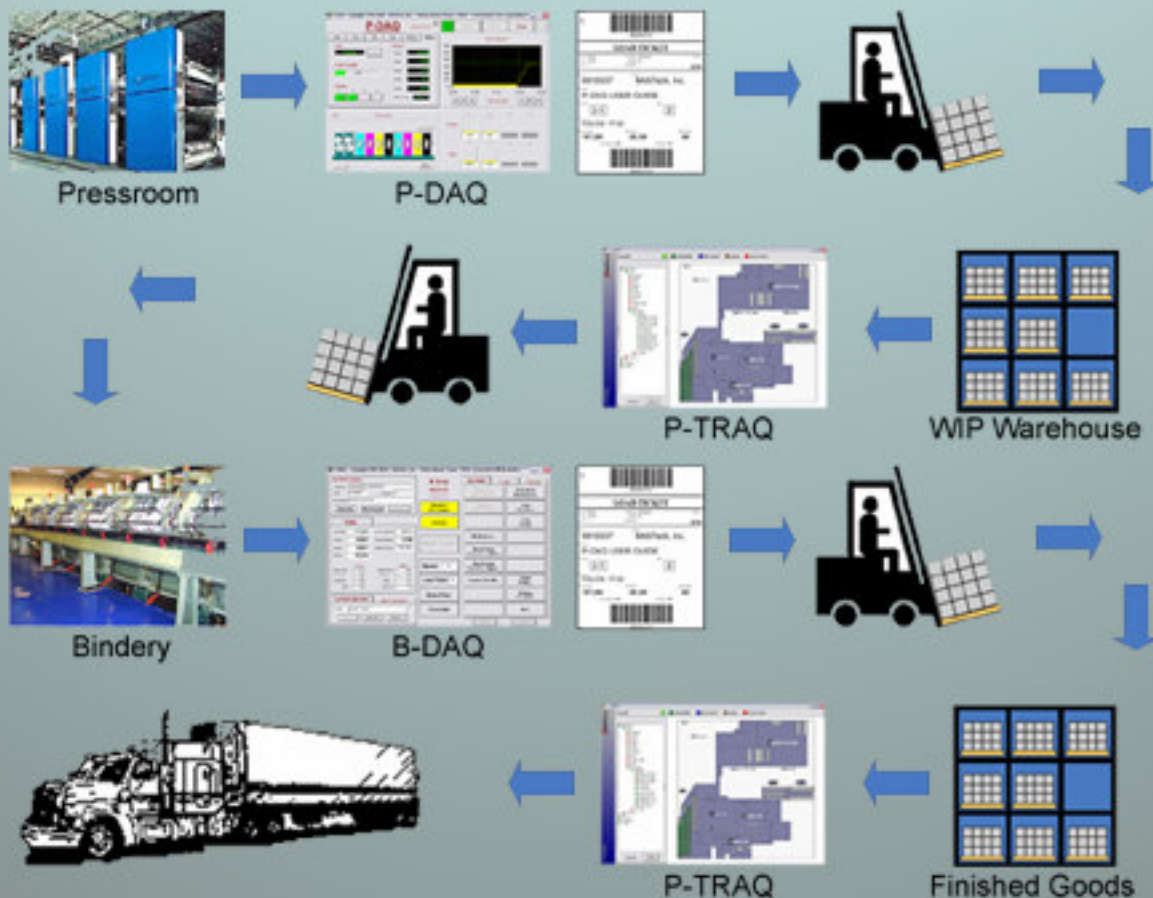
B-DAQ

Bindery Management/Counting System. Runs on saddle stitcher, perfect binder, and other finishing lines.

P-TRAQ

Pallet Tracking System. A Work-In-Process Skid Content Tracking and Locator System, ideal for all book printers including those printing versions of books, catalog printers doing selective binding, and for direct mail printers.

PRODUCTION WORKFLOW





P-DAQ represents the future of Press Management. The system collects, analyzes, and reports on the pressroom data that print managers have long been asking for, but was previously too costly and time consuming to acquire.

P-DAQ utilizes state of the art technology such as touch screen monitors, a graphical user interface, and electronic data acquisition to monitor gross impressions, waste impressions, net count by signature, estimated time remaining, press performance, pallet production data, and much more. Accurate pallet counts with bar-coded load tickets for WIP pallet tracking systems are also provided.

Paper Management and Ink Tracking sub-systems are available to provide automatic tracking and reporting of paper and ink consumption.

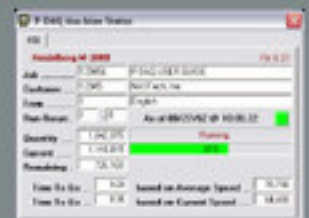
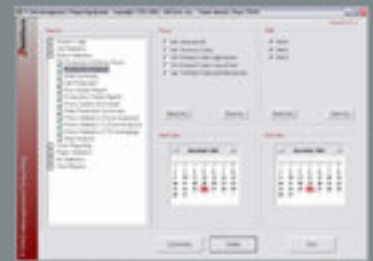
P-DAQ has been designed to take full advantage of modern day presses. From the simplest of sheet fed presses, to the most sophisticated web presses such as the Heidelberg M-3000, P-DAQ provides a common solution for all presses and delivery configurations.

P-DAQ can be configured to count using the method best suited for each of your presses. Stacker controls, scales, divert gates, laser scanners, automatic stackers, and palletizers are all supported by the system. P-DAQ has been tested and proven to provide accurate waste and net counts to within 0.1%.

Providing a JDF compliant and open systems architecture, P-DAQ can communicate with your current systems to facilitate the exchange of important information throughout your business.

Real-Time Press Status information is available to customer service representatives, scheduling department personnel and plant managers to monitor the current status of jobs from anywhere in the world with "up to the minute" data fed directly from the pressroom.

The Reporting Module contains more than 40 different reports used to identify equipment problems, analyze productivity and monitor performance. Many of these reports can be selected by press, by date, by shift, by crew and by form. Charts provide a graphical representation of key historical data for long term planning and trend analysis. Query and report writing capabilities are available for ad-hoc reporting as well. This unparalleled flexibility enables management to get the specific information they need—tailored to the specific needs of their business.



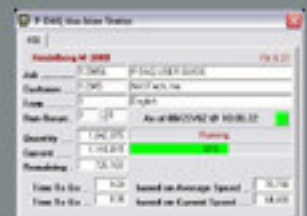
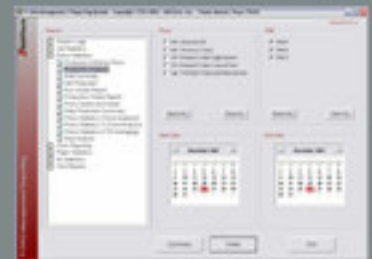


KEY BENEFITS

- A common solution for all presses and delivery configurations.
- Flexibility to take full advantage of the automated delivery systems available on modern day presses.
- Accurate waste and net counts by form.
- Accurate counts by pallet for WIP tracking.
- Waste and downtime categorized by reason code.
- Automatic capture of both performance and productivity data.
- Alarm and/or automatic shutdown of press at end of run.
- Automatic tracking of paper and ink consumption.
- Reporting of impressions, basis weight and web breaks by roll.
- Definition and queuing of jobs at each press prior to run-time.
- Real-time press status monitoring from anywhere.
- Graphical representation of key historical data.
- Query and report writing capabilities.
- System diagnostic capability for trouble-shooting system and electrical problems.

P-DAQ is a flexible, reliable, user-friendly system that can provide a return on investment in less than one year, and will continue to provide benefits to your business for years to come.

To learn more about how P-DAQ or our other systems can work for you, visit us on the web at www.nastechinc.com, or call us today at (888) 9-NAS^Tech to discuss your business needs. We are looking forward to working with you in the future.





Finally, a DMI system for the bindery...

B-DAQ collects, analyzes and reports on the bindery data that is necessary to make key decisions in one of the most important aspects of printing, the completion of the finished product.

B-DAQ utilizes state of the art technology such as touch screen monitors, a graphical user interface, and electronic data acquisition to provide the real-time monitoring of gross, net and waste counts, estimated time remaining, machine performance, pallet production data, and much more. Accurate pallet counts with bar-coded load tickets for pallet tracking systems are also provided.

B-DAQ has been designed to take full advantage of modern day machines and provides a common solution for all finishing equipment in your bindery. The system has been developed with the same structure, database and reports as its big brother P-DAQ. Having the same back-end ensures that all of your systems can be managed cohesively.

Providing a JDF compliant and open systems architecture, B-DAQ can communicate with your current systems to facilitate the exchange of important information throughout your business.

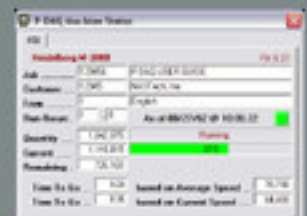
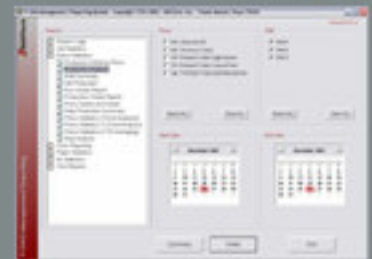
Real-Time Machine Status information is available to customer service representatives, scheduling department personnel, and plant managers to monitor the current status of jobs from anywhere in the world with "up to the minute" data fed directly from the bindery.

The Reporting Module contains more than 30 different reports used to identify equipment problems, analyze productivity and monitor performance. Many of these reports can be selected by machine, by date, by shift, by crew and by version. Charts provide a graphical representation of key historical data for long term planning and trend analysis. Query and report writing capabilities are available for ad-hoc reporting as well. This unparalleled flexibility supplies management with information tailored to the specific needs of their business.

KEY BENEFITS

- A common solution for all bindery machines.
- Accurate net counts by version.
- Accurate counts by pallet for pallet tracking.
- Waste and downtime categorized by reason code.
- Automatic capture of both performance and productivity data.
- Definition and queuing of jobs at each machine prior to run-time.
- Real-time machine status monitoring from anywhere.
- Graphical representation of key historical data.
- Query and report writing capabilities.
- System diagnostic capability for trouble-shooting system and electrical problems.

To learn more about how B-DAQ or our other systems can work for you, visit us on the web at www.nastechinc.com, or call us today to discuss your business needs. We are looking forward to working with you in the future.





P-TRAQ acts as a quintessential bridge between the P-DAQ and B-DAQ systems to track pallets from the moment of creation until the moment they are consumed.

P-TRAQ was designed with both large and small companies in mind as it is customized to fit each individual company's unique requirements. From simple tracking of work in process product in small plants, to world-wide tracking of product, all of your requirements can be handled by the system with ease.

P-TRAQ provides users with a feature-rich, graphical, user friendly means to track "Work in Process" goods at the Country, State/Province, City, Plant, Warehouse, Zone, and the actual Rack & Bay location level.

P-TRAQ provides users with the ability to locate existing pallets, to know where empty or full bays are in the warehouse, and which pallets are no longer required and need to be shredded.

P-TRAQ facilitates the efficient storage of pallets. Management can organize the warehouse by reserving space for pallets produced for a specific job and when a pallet is to be moved, the system will give the operator the location of the last pallet stored for the associated job.

P-TRAQ supports Inter-Warehouse Transfers. Pallets scanned for transfer to other locations will appear in the system in both locations as "In Transit" until scanned at the destination location.

P-TRAQ provides an impressive list of reports to help manage your warehouses. Reports by location, date, job and customer are available as well as history reports which detail every movement and quantity adjustment made to a pallet from creation to consumption. Aging reports and purging options are instrumental to keeping your warehouses well organized and cost-effective. Reports are also provided to identify pallets which may no longer be needed in an effort to increase the usable space in your warehouse.

P-TRAQ can communicate with your current systems to facilitate the exchange of vital information throughout your business.

INTERFACES:

- Interfaces to existing portable devices already in use at your facility.
- Future support for pallet storage robotics is planned, as is future support for RFID devices.
- Support for Omni- Directional Scanners is planned to allow user to view real-time movement of pallets throughout the plant.
- Automatic interfaces to the P-DAQ and B-DAQ systems are provided.

To learn more about how P-TRAQ or our other systems can work for you, visit us on the web at www.nastechinc.com, or call us today to discuss your business needs. We are looking forward to working with you in the future.

